



BCRSD

Boone County Regional Sewer District

Clean water for your future

AREA WIDE MANAGEMENT PLAN & CAPITAL IMPROVEMENTS PLAN

LONG RANGE PLANNING FOR BCRSD



JESSE STEPHENS, P.E.

*INTERIM EXECUTIVE
DIRECTOR & FACILITIES
ENGINEERING MANAGER*



BCRSD

Boone County Regional Sewer District
Clean water for your future

DANIEL CUNNINGHAM
PROJECT MANAGER

DREW PERKINS



BCRSD

Boone County Regional Sewer District
Clean water for your future

MCCLURE ENGINEERING

ELLEN WOLTJEN, P.E.

COBY CROWL, P.E.

DERICK ANDERSON, P.E.



BCRSD

Boone County Regional Sewer District
Clean water for your future

FORMAT:

1) PRESENTATION BY BCRSD & MCCLURE

2) PUBLIC HEARING –

**3) COMMENTERS PHYSICALLY AT THE MEETING GO FIRST –
VIRTUAL ATTENDEES WILL GO SECOND**

A) APPROACH MICROPHONE

B) STATE AND WRITE DOWN YOUR NAME AND ADDRESS

C) 3 MINUTE TIME LIMIT TO MAKE STATEMENTS

**D) STAFF MAY CHOOSE TO ANSWER ANY QUESTIONS THAT
ARISE FROM A STATEMENT OR MOVE ON TO THE NEXT
COMMENTER**



What IS BCRSD'S Mission?

OUR MISSION IS TO PROVIDE CURRENT AND FUTURE CUSTOMERS WITH COST EFFECTIVE, RELIABLE SANITARY SEWER SERVICE BY COLLECTING AND TREATING WASTEWATER, AND TO PROTECT PUBLIC HEALTH AND THE ENVIRONMENT IN ACCORDANCE WITH LOCAL, STATE AND FEDERAL PERMIT REQUIREMENTS.



BCRSD

Boone County Regional Sewer District
Clean water for your future

What does BCRSD do?

- WE EVALUATE NEEDS AND DETERMINE WASTEWATER COLLECTION AND TREATMENT SOLUTIONS THAT ARE ECONOMICALLY FEASIBLE TO IMPLEMENT
- EVALUATE NEW TECHNOLOGIES AND BEST PRACTICES FOR WASTEWATER TREATMENT
- COLLABORATE WITH DEVELOPERS TO ASSIST IN REGULATORY COMPLIANCE FOR WASTEWATER
- HELP KEEP BOONE COUNTY STREAMS FISHABLE, SWIMMABLE, AND HEALTHY



BCRSD

Boone County Regional Sewer District
Clean water for your future

How do we do it?

- OPERATES 22 WASTEWATER TREATMENT PLANTS & THEIR ASSOCIATED SEWER COLLECTION SYSTEMS.
- MAINTAINS 95 MILES OF GRAVITY SEWER MAIN AND 44 MILES OF PRESSURE SEWER MAIN.
- HAS A STAFF OF 9 TREATMENT PLANT AND EQUIPMENT OPERATORS.
- WWTP FACILITY SIZES RANGE FROM 1,850 GALLONS PER DAY TO 460,000 GALLONS PER DAY.
- PROVIDES CONTRACT OPERATIONS FOR COMMUNITIES SUCH AS ASHLAND, HARTSBURG, AND EMERGENCY OPERATIONS TO OTHER COMMUNITIES.
- OWNS AND OPERATES MUNICIPAL SYSTEMS SUCH AS THE ROCHEPORT SYSTEM.



How do we do it?

- CONDUCTS PLAN REVIEW AND ENSURES REGULATORY COMPLIANCE FOR NEW DEVELOPMENT IN UNINCORPORATED BOONE COUNTY.
- COORDINATES WITH DNR AND BOONE COUNTY RESOURCE MANAGEMENT FOR WASTEWATER COMPLIANCE LIMITS.
- COORDINATES BILLING FOR APPROXIMATELY 7,800 “UNITS.”
- HAS AN ADMINISTRATIVE STAFF OF 3 PEOPLE FOR ACCOUNTING AND CUSTOMER RELATIONS.
- HAS A STAFF OF TWO 2 PEOPLE FOR ENGINEERING AND PROJECT DEVELOPMENT.



BCRSD

Boone County Regional Sewer District
Clean water for your future

What does BCRSD do?

What We Do



WE CHANGE THIS...



INTO THIS!



BCRSD

Boone County Regional Sewer District
Clean water for your future

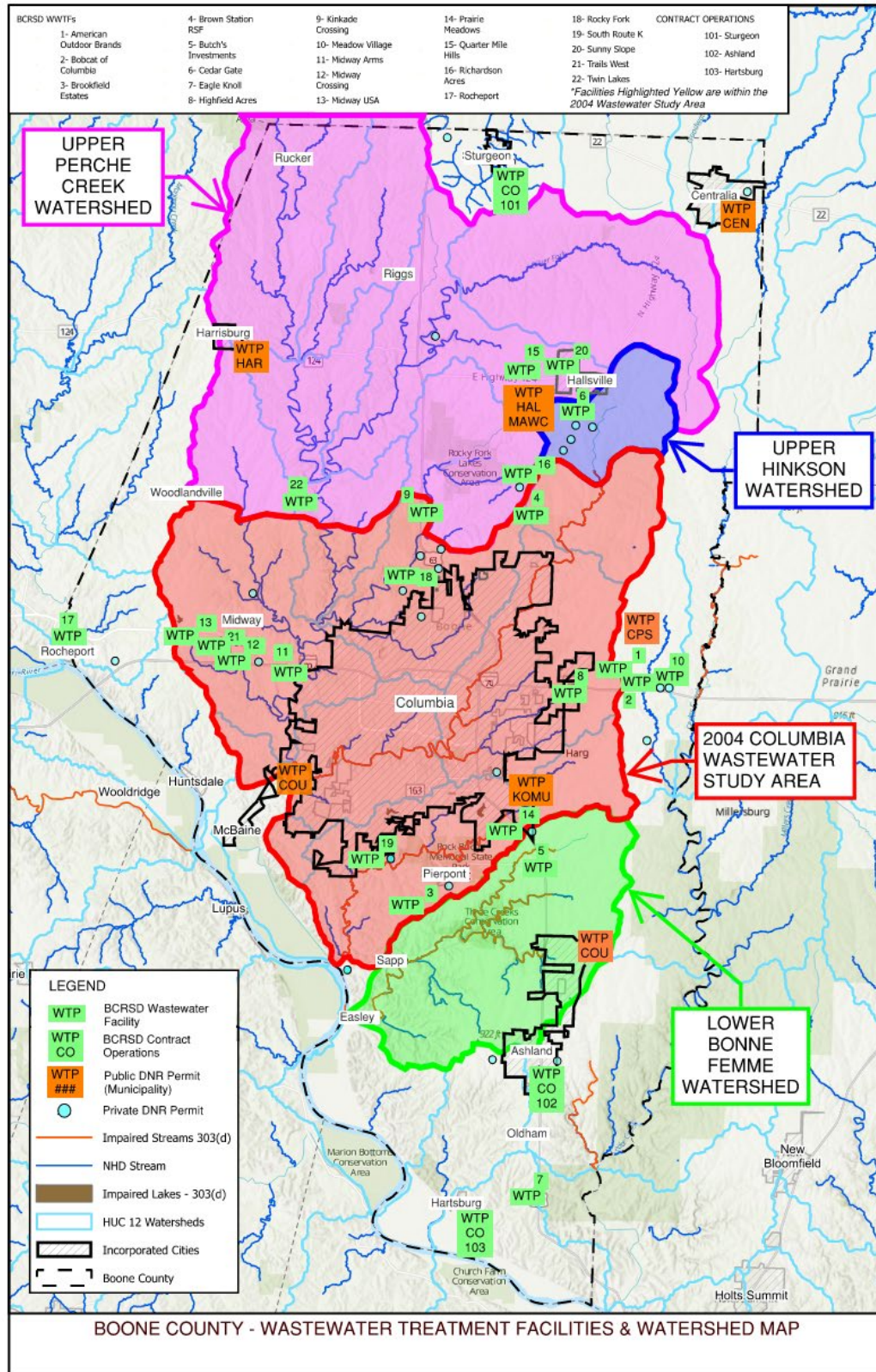
What is the Area Wide Management Plan?

- FRAMEWORK TO CAPITALIZE ON BCRSD'S PROFESSIONAL SERVICES AND PLANNING CAPABILITIES ACROSS BOONE COUNTY AND BEYOND.
- IT UPDATES A MASTER PLAN THAT WAS DEVELOPED IN 2013.
- IT ADDRESSES HOW CURRENT DNR-PERMITTED WASTEWATER TREATMENT FACILITIES ARE PLANNED FOR, UPGRADED, AND REGIONALIZED.
- REFINES BCRSD'S TIER 2 AUTHORITY IN JOINT COOPERATION WITH THE CITY OF COLUMBIA'S TIER 2 AUTHORITY.
- HELPS BOONE COUNTY COMMUNICATE WITH PRIVATE SYSTEM OWNERS AND LOOK FOR OPTIONS TO REGIONALIZE AND OPTIMIZE FAILING SYSTEMS.
- DEVELOPS A WAIVER PROCESS FOR HOW BCRSD, DNR, AND PRIVATE FACILITIES WORK TOGETHER, COMMUNICATE, AND PLAN THE FUTURE.



BCRSD
Boone County Regional Sewer District
Clean water for your future

WHERE ARE THE
DNR PERMITTED
WWTP'S IN
BOONE
COUNTY?





BCRSD

Boone County Regional Sewer District
Clean water for your future

BCRSD WWTP'S

- | | |
|----------------------------|------------------------|
| 1. AMERICAN OUTDOOR BRANDS | 12. MIDWAY CROSSING |
| 2. BOBCAT OF COLUMBIA | 13. MIDWAY USA |
| 3. BROOKFIELD ESTATES | 14. PRAIRIE MEADOWS |
| 4. BROWN STATION RSF | 15. QUARTER MILE HILLS |
| 5. BUTCH'S INVESTMENTS | 16. RICHARDSON ACRES |
| 6. CEDAR GATE | 17. ROCHEPORT |
| 7. EAGLE KNOLL | 18. ROCKY FORK |
| 8. HIGHFIELD ACRES | 19. SOUTH ROUTE K |
| 9. KINKADE CROSSING | 20. SUNNY SLOPE |
| 10. MEADOW VILLAGE | 21. TRAILS WEST |
| 11. MIDWAY ARMS | 22. TWIN LAKES |

THERE WERE 37 BCRSD FACILITIES IN 2013



BCRSD

Boone County Regional Sewer District

Clean water for your future

PUBLIC MUNICIPAL WWTP'S

1. STURGEON
2. HARRISBURG
3. CENTRALIA
4. HALLSVILLE - MAWC
5. COLUMBIA PUBLIC SCHOOLS – TWO MILE PRAIRIE
6. COLUMBIA
7. KOMU-TV
8. COLUMBIA AIRPORT
9. ASHLAND
10. HARTSBURG



BCRSD

Boone County Regional Sewer District

Clean water for your future

PRIVATE DNR PERMITTED WWTP'S

- | | |
|-----------------------------------|----------------------------------|
| 1. ADVENTURES IN LEARNING DAYCARE | 14. LES BOURGEOIS WINERY |
| 2. ASHLAND CHRISTIAN CHURCH | 15. LIBERTY BAPTIST CHURCH |
| 3. CARLOS ACRES | 16. LITTLE CITY MOBILE HOME PARK |
| 4. COOPER'S LANDING | 17. MATHIS MOBILE HOME PARK |
| 5. CORNELL'S FRIENDLY ACRES | 18. MIDWAY AUTO/TRUCK PLAZA |
| 6. CROWLEY SUBDIVISION | 19. OAK RIDGE TRAILER COURT |
| 7. EDELWEISS | 20. PAGE PROPERTY |
| 8. GILBANE REBUILDERS | 21. PHENORA NORTH |
| 9. GIRL SCOUTS – SILVER MEADOWS | 22. PIERPONT STORE |
| 10. HALLSVILLE UNITED METHODIST | 23. SALLEE POST SERVICE |
| 11. HILLCREST RESIDENTIAL | 24. SMITHVIEW DEVELOPMENT |
| 12. JUNCTION OUTPOST | 25. SOUTHRIDGE MOBILE HOME |
| 13. LAKE CHATEAU | 26. WOODSTOCK MOBILE HOME PARK |

THERE WERE 57 PRIVATE FACILITIES IN 2013



What is our Capital Improvements Plan?



What is the Capital Improvements Plan?

- PLAN FOR ADDRESSING PERMIT COMPLIANCE SCHEDULES.
- PLAN FOR ADDRESSING TREATMENT FACILITY UPGRADES.
- PLAN FOR CAPACITY EXPANSION IMPROVEMENTS.
- PLAN FOR COLLECTION SYSTEM IMPROVEMENTS.
- PLAN FOR OPERATIONAL ENHANCEMENTS.

THE GOAL IS TO INVEST IN SYSTEM IMPROVEMENTS THAT REDUCE OPERATION COSTS WHILE INCREASING ENVIRONMENTAL STEWARDSHIP.



BCRSD

Boone County Regional Sewer District

Clean water for your future

\$1 MILLION SRF GRANT

COMPLIANCE SCHEDULES



1. BROWN STATION	\$4.1 MILLION (\$2 MILLION ALTERNATIVE)
2. RICHARDSON ACRES	\$2 MILLION
3. SOUTH ROUTE K	\$21.6 MILLION
4. TRAILS WEST	\$1.7 MILLION
5. TWIN LAKES	\$2.3 MILLION
6. CEDAR GATE	\$3.5 MILLION
7. QUARTER MILE HILLS	\$1.7 MILLION
8. SUNNYSLOPE	\$1.1 MILLION

\$38 MILLION OVER 20 YEARS



BCRSD

Boone County Regional Sewer District
Clean water for your future

TREATMENT UPGRADES

1. KINKADE CROSSING	\$0.5 MILLION
2. MEADOW VILLAGE	\$0.3 MILLION
3. MIDWAY CROSSING	\$0.2 MILLION
4. PRAIRIE MEADOWS	\$0.9 MILLION
5. ROCHEPORT	\$0.1 MILLION
6. ROCKY FORK	\$1.5 MILLION
7. AMERICAN OUTDOOR BRANDS	\$0.1 MILLION
8. EAGLE KNOLL	\$0.3 MILLION
9. MIDWAY USA	\$0.1 MILLION

\$4 MILLION OVER 10 YEARS



BCRSD

Boone County Regional Sewer District
Clean water for your future

COLLECTION SYSTEM UPGRADES

1. CEDAR LAKE SIPHON	\$0.9 MILLION
2. HILL CREEK PRESSURE SEWER	\$0.2 MILLION
3. WOODLANDS PRESSURE SEWER	\$0.2 MILLION
4. NEW TOWN PUMP STATION	\$0.2 MILLION
5. ROLLINGWOOD AERIAL CROSSING	\$0.4 MILLION
6. FAIRWAY WEST PUMP STATION	\$1.4 MILLION
7. CLEARVIEW NORTH PUMP STATION	\$0.4 MILLION
8. VARIOUS PUMP STATION UPGRADES	\$0.2 MILLION
9. WATERS EDGE	\$2.2 MILLION

\$6 MILLION OVER 20 YEARS



BCRSD

Boone County Regional Sewer District
Clean water for your future

OPERATIONAL ENHANCEMENTS

1. PORTABLE SLUDGE PRESS	\$1.5 MILLION
2. FLOW METERING	\$0.1 MILLION
3. COLLECTION SYSTEM EVALUATIONS	\$3.6 MILLION
4. COLLECTION SYSTEM REHAB	\$17.8 MILLION

\$23 MILLION OVER 20 YEARS

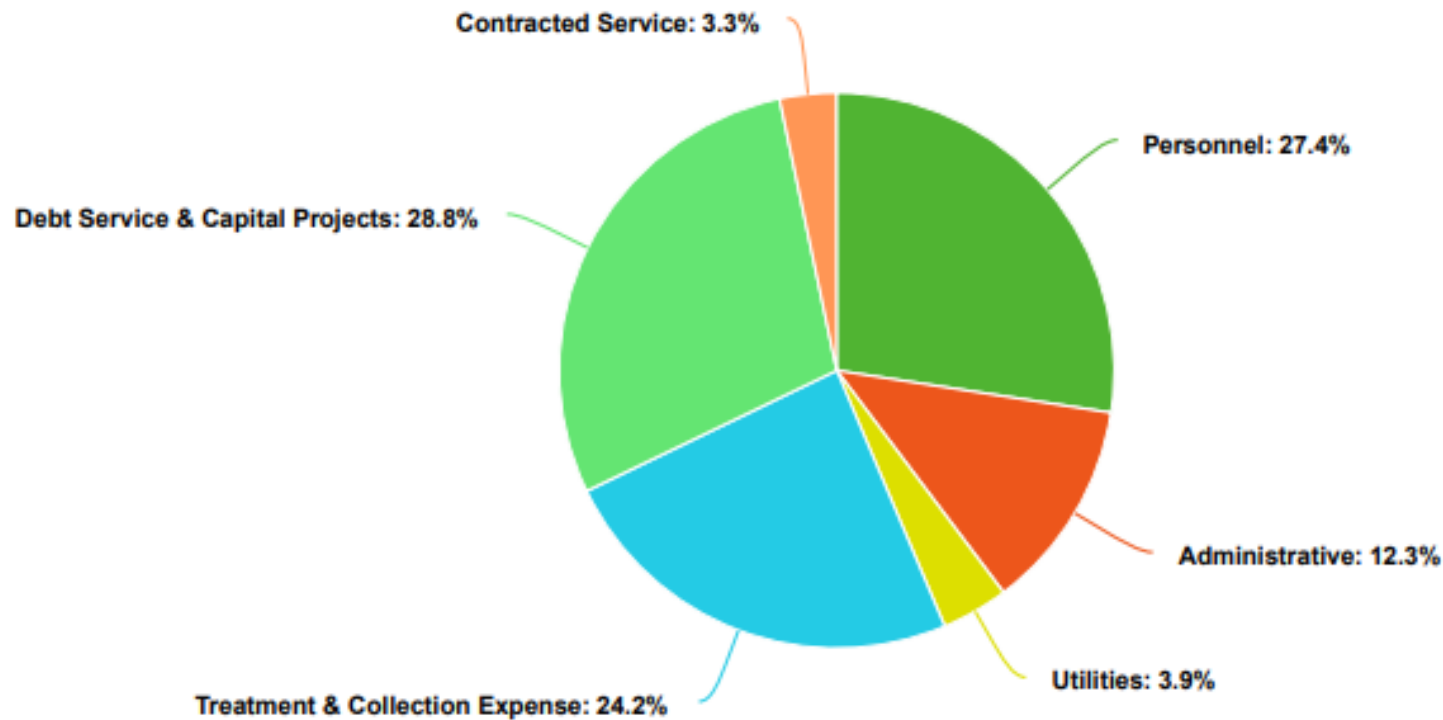
**GRAND TOTAL: \$71 MILLION
OVER 20 YEARS**



BCRSD

Boone County Regional Sewer District
Clean water for your future

BCRSD BUDGET/EXPENSES



■ Personnel ■ Administrative ■ Utilities ■ Treatment & Collection Expense ■ Debt Service & Capital Projects
■ Contracted Service



BCRSD

Boone County Regional Sewer District
Clean water for your future

HOW DO WE PAY FOR ALL OF THIS?

1. GRANTS FROM DNR'S STATE REVOLVING FUND
2. LOW INTEREST LOANS FROM DNR'S STATE REVOLVING FUND
-(30% OF THE MARKET INTEREST RATE)
3. CDBG – COMMUNITY DEVELOPMENT BLOCK GRANTS
4. USDA RURAL DEVELOPMENT WASTEWATER GRANTS AND LOANS
5. ARPA, ARRA, AND OTHER FEDERAL SPECIALTY GRANT PROGRAMS
6. NEW DEVELOPMENT CONNECTION FEES
7. DEVELOPER BUILT AND DONATED INFRASTRUCTURE
8. CUSTOMER BASE GROWTH
9. SPECIAL CONNECTION FEES – (GREEN LINE FEES)
10. STRATEGIC PARTNERSHIPS AND COST REDUCTION STRATEGIES
11. COST SAVINGS FROM OPERATIONAL ENHANCEMENTS
12. IMPROVEMENT DISTRICTS (NID'S AND CID'S)
13. RATE INCREASES



BCRSD

Boone County Regional Sewer District
Clean water for your future

COST EFFECTIVENESS

1. EACH \$1,000,000 IN NEW DEBT SERVICE = \$0.63 PER MONTH TO EACH RATE PAYER WHEN USING DNR SRF LOANS (20 YEAR TERM)
2. EACH \$1,000,000 IN NEW DEBT SERVICE = \$0.95 PER MONTH TO EACH RATE PAYER WHEN USING MARKET RATE LOANS AND BONDS (20 YEAR TERM)
3. GRANTS OBTAINED REDUCE PRINCIPAL COSTS OF THE PLAN
4. STRATEGIC PARTNERSHIPS REDUCE PRINCIPAL COSTS OF THE PLAN
5. GOOD ENGINEERING STRATEGIES REDUCE PRINCIPAL COSTS OF PLAN
6. DEVELOPER DONATED INFRASTRUCTURE INCREASES OUR CUSTOMER BASE, AND SPREADS OUR COST TO MORE CUSTOMERS
7. CREATIVE FINANCING STRATEGIES (CID'S, GREEN LINE FEES, CONNECTION FEES) SHIFT THE FINANCIAL BURDEN FROM EXISTING RATE PAYERS
8. OPERATION ENHANCEMENTS OFFSET DEBT SERVICE BY REDUCING OPERATING COSTS.



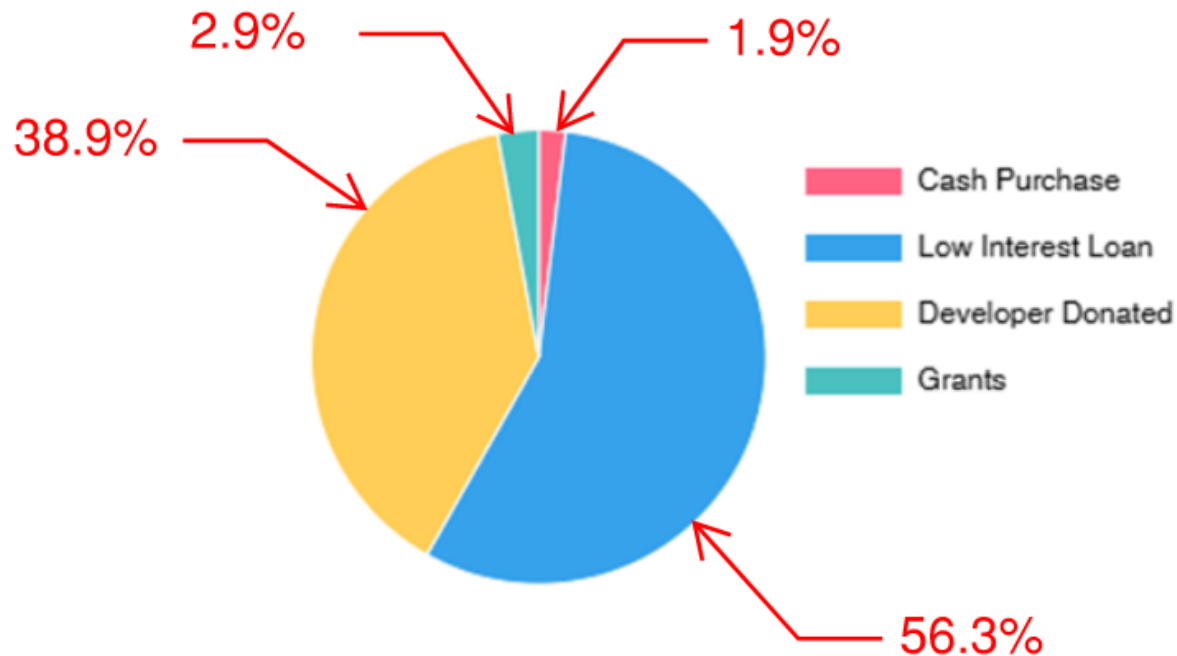
BCRSD

Boone County Regional Sewer District

Clean water for your future

WHAT WAS BCRSD'S HISTORICAL STRATEGY?

BCRSD SEWER INFRASTRUCTURE



**APPROXIMATELY \$50
MILLION
IN INFRASTRUCTURE
- PAST 20 YEARS**



BCRSD

Boone County Regional Sewer District
Clean water for your future

Next Steps?

- STAKEHOLDER FEEDBACK – (JUNE, JULY, AUGUST, SEPTEMBER)
- PUBLIC HEARING – (SEPTEMBER 8TH 2025)
- PLAN REVISIONS AND UPDATES FROM COMMUNITY FEEDBACK
- PRELIMINARY USER RATE STUDY
- BOARD OF TRUSTEES APPROVAL (TENATIVELY OCTOBER/NOVEMBER 2025)
- SECOND PUBLIC HEARING – TO BE SCHEDULED IN 4TH QUARTER OF 2025 OR 1ST QUARTER OF 2026
- PRESENT PLAN TO CLEAN WATER COMMISSION – 1ST OR SECOND QUARTER 2026



BCRSD

Boone County Regional Sewer District

Clean water for your future

WE NEED YOUR FEEDBACK!
GO TO WWW.BCRSD.COM



BCRSD
Boone County Regional Sewer District

1314 N. 7TH ST. COLUMBIA MO 65201 (573) 443-2774 [PAY YOUR BILL](#) [BOARD OF TRUSTEES](#) [RULES & REGULATIONS](#) [NEWS & PUBLIC NOTICES](#)

Area-Wide Management Plan (AWMP) + Capital Improvement Plan (CIP)

CLEAN WATER FOR YOUR FUTURE

[PAY YOUR BILL AND UTILITY ASSISTANCE](#)

[24 HR EMERGENCY SERVICE
\(573\) 443-2774](#)

[EMPLOYMENT](#)



BCRSD

Boone County Regional Sewer District

Clean water for your future

WE NEED YOUR FEEDBACK! GO TO WWW.BCRSD.COM



1314 N. 7TH ST. COLUMBIA MO 65201

(573) 443-2774

[PAY YOUR BILL](#)

[BOARD OF TRUSTEES](#)

[RULES & REGS](#)

[Area-Wide Management Plan](#)

[Capital Improvement Plan](#)

The Boone County Regional Sewer District Area-Wide Management Plan (AWMP) serves as a comprehensive framework for managing wastewater infrastructure across Boone County. As an update to BCRSD's 2013 Tier 2 Plan approved by the Missouri Clean Water Commission, this AWMP reflects more than a decade of progress in regionalizing and consolidating public and private wastewater systems into more efficient regional facilities operated by BCRSD, the City of Columbia, and other municipal partners. This move toward regionalization is a key strategy for protecting the environment, improving public health, and ensuring reliable and affordable service for customers.

The AWMP will be presented to the Missouri Clean Water Commission to re-affirm BCRSD and the City of Columbia's joint status as Level 2 Continuing Authorities in Boone County. Through this authority, BCRSD collaborates with the Missouri Department of Natural Resources (MDNR), the City of Columbia, and other municipal partners to enforce standards for wastewater services and oversee treatment facility operations. The AWMP evaluates existing public and private wastewater treatment facilities in Boone County and provides recommendations, including connection to regional infrastructure where feasible.



BCRSD

Boone County Regional Sewer District

Clean water for your future

WE NEED YOUR FEEDBACK! GO TO WWW.BCRSD.COM

Questions or Comments?

We welcome your feedback and inquiries. If you have any questions about the Area-Wide Management Plan, Capital Improvements Plan, or how these efforts may impact your area, please don't hesitate to reach out.

You can use the form below to submit your question or comment, and a member of our team will get back to you promptly.

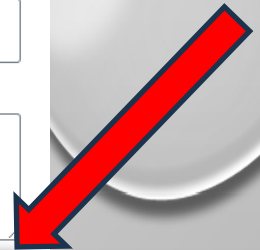
Prefer to speak with someone directly? Feel free to call our office at **573-443-2774** during regular business hours.

Name

Email

Message

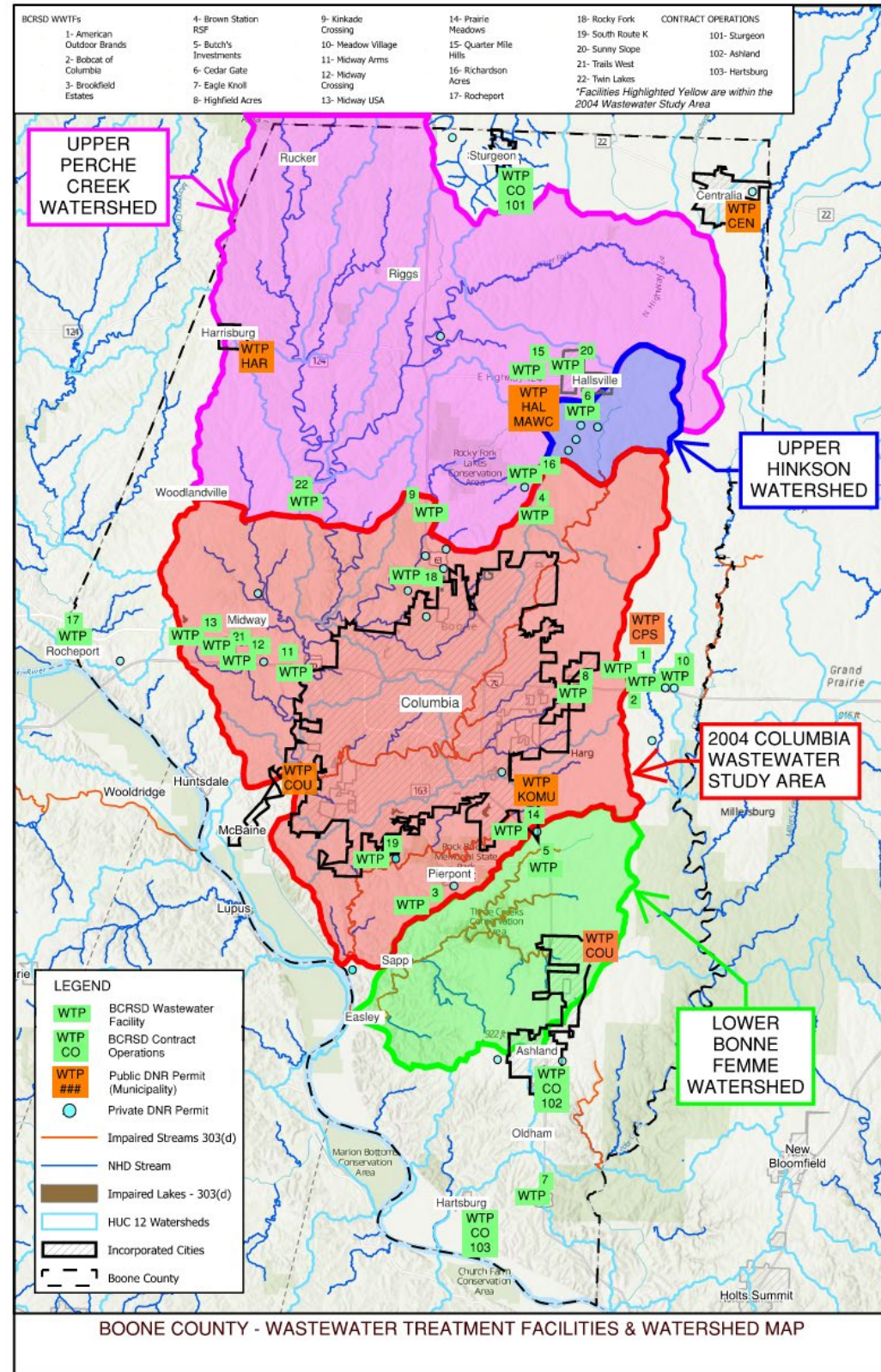
Send





BCRSD
Boone County Regional Sewer District
Clean water for your future

PUBLIC HEARING





BCRSD

Boone County Regional Sewer District
Clean water for your future

PUBLIC HEARINGFORMAT:

1) PRESENTATION BY BCRSD & MCCLURE

2) PUBLIC HEARING –

**3) COMMENTERS PHYSICALLY AT THE MEETING GO FIRST –
VIRTUAL ATTENDEES WILL GO SECOND**

A) APPROACH MICROPHONE

B) STATE AND WRITE DOWN YOUR NAME AND ADDRESS

C) 3 MINUTE TIME LIMIT TO MAKE STATEMENTS

**D) STAFF MAY CHOOSE TO ANSWER ANY QUESTIONS THAT
ARISE FROM A STATEMENT OR MOVE ON TO THE NEXT
COMMENTER**