

From: [Stephens, Jesse](#)
To: [Stephens, Jesse](#)
Cc: [BCRSD Custodian](#)
Subject: AWMP - Stakeholder Engagement
Date: Friday, May 16, 2025 7:23:35 AM
Attachments: [BCRSD - AWMP-CIP - STAKEHOLDER REVIEW DOCUMENT - COLUMBIA 5-15-2025.pdf](#)
[image001.png](#)

Dear Board of Trustees:

I've been working on a stakeholder engagement document intended to summarize the AWMP and the CIP and solicit feedback. My intention would be to do stakeholder engagement meetings in June and July, and solicit as much feedback as possible, with the ultimate goal of having edits compiled and perhaps board action at the August meeting. We can discuss the exact timeframe, but getting this process started is the next step in our goal to get this approved. I look forward to going over this with you, and how we might tailor it depending on the specific stakeholder we are meeting with.



Jesse Stephens, Facilities Engineering Manager
Boone County Regional Sewer District (BCRSD)
1314 N. 7th St., Columbia, MO 65201
C: 573.239.4025 | O: 573.443.2774
e: jstephens@bcrsd.com | w: www.bcrsd.com



BCRSD Long-Term Planning Efforts and Area Wide Management Plan

Over the past year, the Boone County Regional Sewer District (BCRSD) has been engaged in a long-term planning process that had yielded an Area-Wide Management Plan (AWMP) and Capital Improvement Plan (CIP). As a key stakeholder, we are pleased to provide an overview of these efforts to solicit your feedback and to identify areas for continued collaboration.

Drafts of the AWMP and CIP are available for review and comment on our website at www.bcrsd.com

Area Wide Management Plan

BCRSD worked to develop an Area-Wide Management Plan (AWMP) that updates the 2013 “*Tier 2 Plan for Private Facilities*” originally approved by the Missouri Clean Water Commission in connection with its designation as a Tier-2 Continuing Authority for Boone County jointly with the City of Columbia.

This Tier-2 designation empowers BCRSD under state regulations to encourage regionalization of wastewater collection and treatment services in Boone County, particularly in situations involving failing or inadequate private facilities permitted. BCRSD intends to submit the AWMP for Missouri Clean Water Commission approval later this year after completing its public outreach and education efforts.

Benefits of the AWMP and the Tier-2 Continuing Authority for BCRSD are summarized below:

- **Water Quality Protection**
 - Approximately two-thirds of Boone County’s water shed areas flow southwesterly through the greater Columbia area. Many wastewater facilities operate in this area. Wastewater planning in northern Boone County affects stream health in the Perche and Hinkson Creeks.
 - The Bonne Femme Watershed is a highly sensitive watershed where multiple wastewater facilities are located. Regionalization efforts are important within this watershed.
 - Boone County communities like Sturgeon, Centralia, Rocheport, Ashland, and Hartsburg have unique regionalization challenges due to their location in other watersheds. However, collaboration with BCRSD provides additional resources to smaller communities.
 - BCRSD’s designation as a Tier 2 Continuing Authority provides a powerful tool for collaboration with DNR, municipalities and private facilities to improve water quality by promoting good planning efforts.
- **Affordable and Cost-Effective Sewer Service**
 - Costs to build and maintain public sewer systems have escalated dramatically in the past five years. Opportunities to regionalize are critical. Economies of scale are necessary to mitigate rising costs for all sewer providers.
 - Partnering opportunities allow BCRSD to provide remote communities with affordable operations, maintenance, and planning help within Boone County.
- **Regional Planning, Affordable Housing and Economic Development**
 - With its Tier-2 Continuing Authority, BCRSD is well-equipped to facilitate efforts by cities, the county and other stakeholders to plan for future growth and economic development.
 - BCRSD has continued to cultivate strong relationships and identify opportunities for collaboration and partnerships in maximizing resources available for sewer infrastructure.
 - BCRSD provides guidance to prospective developers within the county for sewer infrastructure development and assists the private sector in smart growth.
 - Affordable sewer service is a critical component of affordable housing. Leveraging existing and proposed sewer resources efficiently helps affordability.



BCRSD – CAPITAL IMPROVEMENTS PLAN OVERVIEW

The Capital Improvements Plan (CIP) is a long-range planning document outlining a strategy for identifying, prioritizing and financing improvements to the BCRSD wastewater collection and treatment infrastructure over the next 20 years. The CIP provides planning level improvement recommendations to address changes in regulations, population growth in Boone County, and aging infrastructure. The CIP emphasizes projects that enhance environmental compliance, treatment facility upgrades and expansion, collection system improvements and operational enhancements.

- **Environmental Compliance**

- Currently 9 of 22 BCRSD-owned wastewater facilities are under water quality schedules of compliance with DNR. All of these require costly upgrades to meet these target deadlines.
- 6 of the 9 facilities facing a schedule of compliance are anticipated to be decommissioned and regionalized to a larger wastewater facility.
- The South Route K facility is the largest BCRSD facility with a water quality schedule of compliance. This facility could cost over twenty million dollars to upgrade. Additional options are being investigated to optimize the existing facility and help reduce the overall cost of this project.

- **Treatment Facility Upgrades and Expansion**

- 10 of the 22 BCRSD facilities require major maintenance projects within the next 10 years, including rehabilitation of aging tanks and mechanical equipment at various locations around Boone County.
- Capacity upgrades are anticipated at the Rocky Fork WWTF to handle growth and expansion in the area north of Columbia. This will require a multi-million-dollar investment.

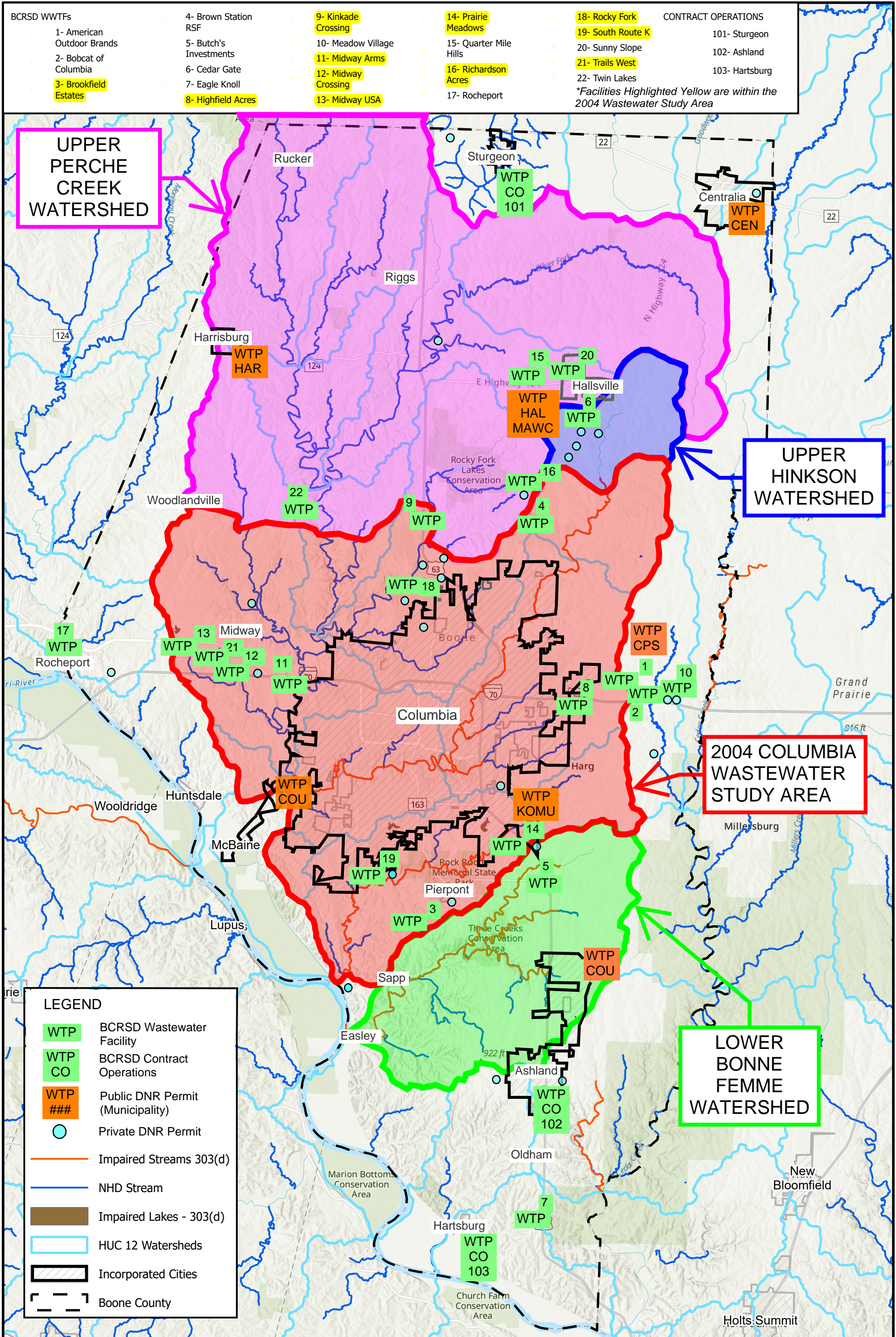
- **Collection System Improvements**

- Improvements are needed to upgrade undersized pump stations or construct gravity sewer interceptors to eliminate pump stations.
- Sewer line upgrades are needed to relieve bottlenecks in both pressure and gravity sewer networks.
- Aging gravity sewer collection systems need continuous evaluation and rehabilitation. Refurbishment of the collection system is projected to cost over twenty-five million dollars in the next twenty years.

- **Operational Enhancements**

- Biosolids and wastewater treatment byproducts are expensive and labor intensive to manage. Newer and more efficient sludge management equipment is needed to reduce operational costs.
- Asset management technology, system evaluation projects, and targeted maintenance will improve preventative maintenance procedures and prolong the life of the system.

*** *The attached Mapping shows the location of various wastewater facilities in Boone County and their position within major watersheds.*





PARTNERING OPPORTUNITIES AND SHARED PRIORITIES

Identifying partnership opportunities with other sewer providers in Boone County is mutually beneficial. These partnerships can help to reduce overall costs and maximize limited resources. This helps reduce the burden on sewer ratepayers and improves water quality for shared creeks and streams. Several of these potential partnerships are outlined below:

- **Sewer Discharge Point Elimination**
 - Both the City of Columbia and Boone County face increasing challenges for improving stream health in the Perche, Hinkson, and Bonne Femme watersheds. Projects that eliminate sewage discharge points within those watersheds by consolidating treatment plants help improve overall water quality in the watershed.
- **Henderson Branch Sewer Extension**
 - This project will extend the City of Columbia sewer to the Midway area and provide the potential to eliminate at least one private DNR facility and one BCRSD maintained facility.
- **South Route K**
 - Both the City of Columbia and BCRSD have seen significant growth near the southwest portions of the city. Significant future growth is projected but the unavailability of cost-effective sewer infrastructure hampers growth in the area.
 - The South Route K facility is located within the Bonne Femme Watershed, heightening the importance of good planning in this area.
 - BCRSD and the City of Columbia should collaborate and explore opportunities to regionalize the South Route K facility. Engineering Alternatives should be evaluated and a cost-benefit analysis should be performed before construction of a new treatment facility in this area.
- **Other BCRSD wastewater facilities within the 2004 Columbia Wastewater Study Area**
 - There are a number of BCRSD facilities within the study area for which partnering opportunities should be evaluated, including:
 - West Region – Midway Arms, Midway Crossing, Midway USA, Trails West
 - North Region – Kincade Crossing, Richardson Acres, Rocky Fork
 - East Region – Highfield Acres, American Outdoor Brands
 - South Region – Brookfield Estates, Prairie Meadows
- **Private DNR wastewater facilities in the 2004 Columbia Wastewater Study Area**
 - There are approximately 11 DNR permitted facilities within the study area that are privately maintained and in various stages of compliance. Partnering opportunities should be researched on the following facilities:
 - Carlos Acres WWTF; Cornell's Friendly Acres WWTF; Crowley Subdivision; Mathis Mobile Home Park WWTF; Midway Auto/Truck Plaza WWTF; Page Property WWTF; Phenora North WWTF; Pierpont Store WWTF; Smithview Development WWTF; Southridge Mobile Home Park WWTF; Woodstock Mobile Home Park WWTF