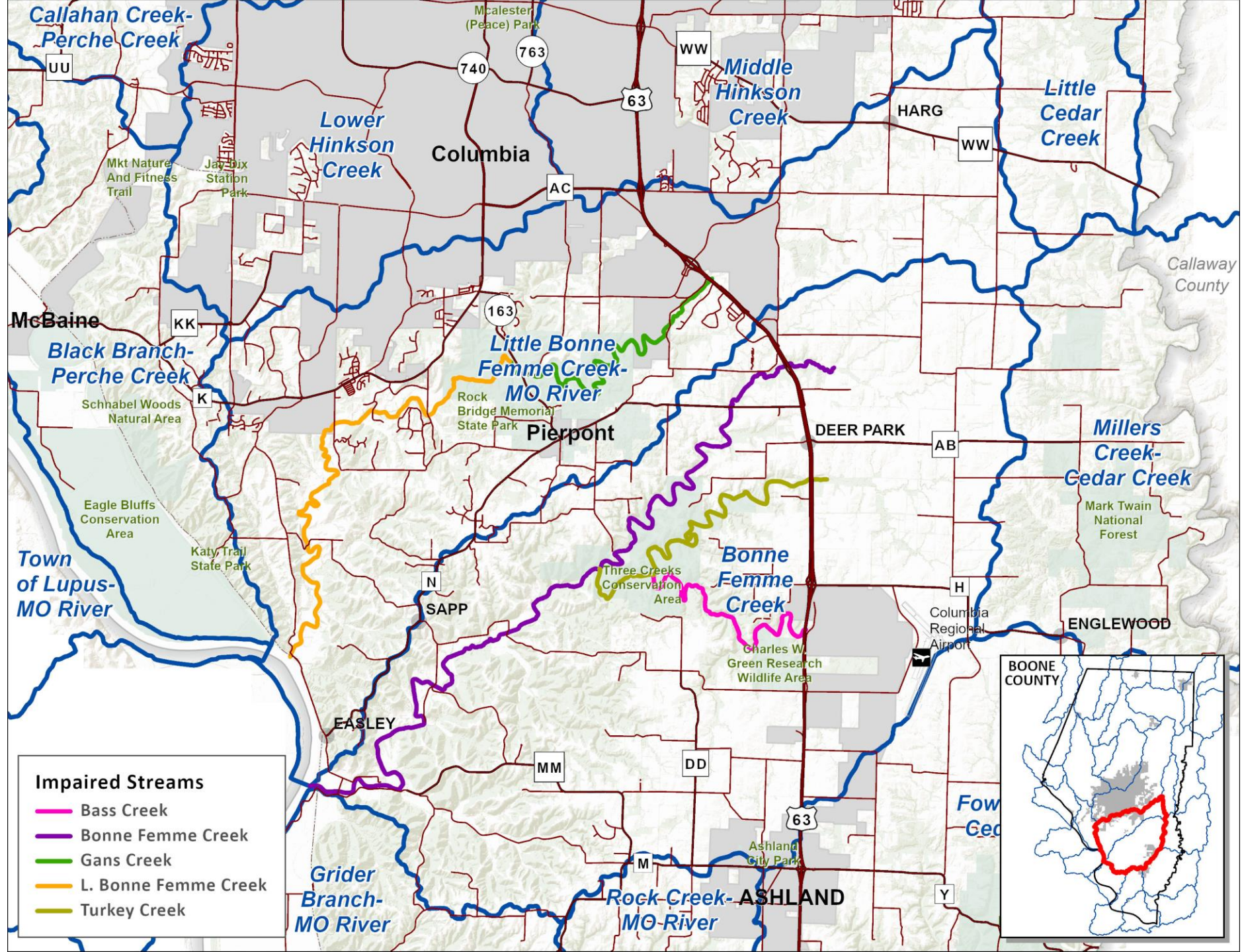


Greater Bonne Femme Watershed Initiative

- 6 stream segments in the Greater Bonne Femme Watershed on the Clean Water Act 303 (d) list for exceedance of bacteria water quality standards (*E. coli*)
- Historical data also indicate high levels of nitrogen and phosphorus – at times at or exceeding EPA regional criteria
- Concentration of Boone County natural resources – Rock Bridge Memorial State Park and Three Creeks Conservation Area
- Several of the impaired streams are also Outstanding State Resource Waters – known for their aesthetic value
- Potential to have TMDLs issued by EPA / MoDNR if restoration not successful
- Objective is not to just restore the impaired waters – also want to protect and conserve all of the streams in the watershed



Highlights from the watershed-based plan

- 9-element watershed-based plan (WBP) which was approved by the US Environmental Protection Agency on June 12, 2023, and is available for review at www.cavewatershed.org
- WBP seeks to improve water quality in the GBFW by installation of best management practices (BMPs) on the agricultural landscape—the selected BMPs have potential to simultaneously reduce pollutants in stormwater runoff:
 - *E. coli*
 - Nutrients – phosphorus and nitrogen
 - Sediment transport

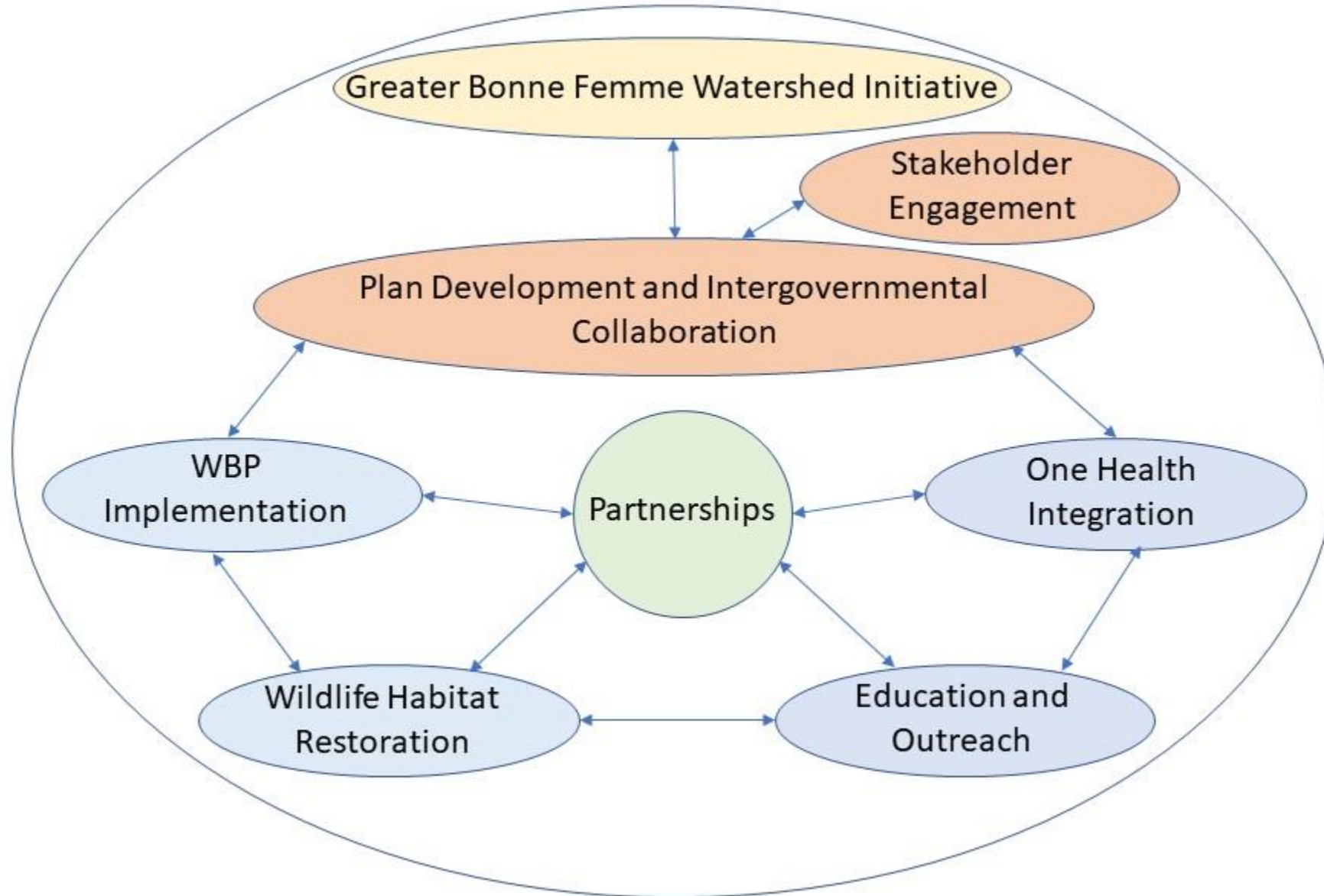
Highlights from the watershed-based plan

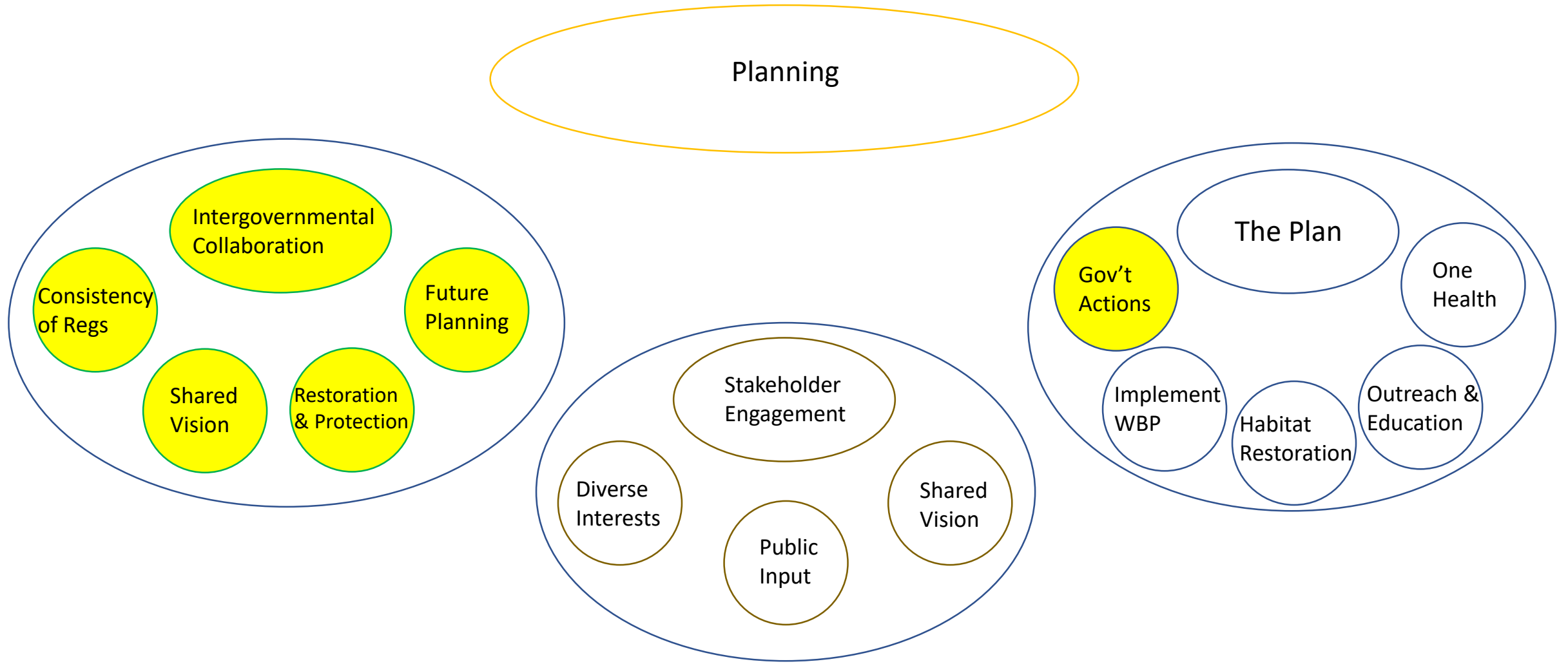
- Additional highlights from the WBP include:
 - A 21-year timeframe to achieve water quality goals as installation of the recommended BMPs by landowners is entirely voluntary;
 - A cover crops pilot project with edge-of-field monitoring to provide feedback on BMP effectiveness;
 - A demonstration project highlighting riparian corridor restoration and management;
 - Outreach and education for agricultural landowners;
 - A septic system maintenance program

It will take a village...

- Boone County Resource Management and partners felt that the WBP did not offer all of the restoration and protection measures necessary given the bountiful natural resources in the GBFW
- Involvement of numerous partners – cities of Columbia and Ashland, federal and state agencies, wildlife conservation organizations
- Goal is to develop a plan that will be adopted by Boone County, the City of Columbia and the City of Ashland – as was the 2007 plan
- The 2007 plan stopped short of implementation – new plan will incorporate actions to achieve water quality goals
- The provision of wastewater services is an integral part of the overall planning process at the watershed scale

Framework for development of the watershed management plan





Intergovernmental collaboration – goal of consistency of regulations concerning land use, wastewater and stormwater regulation (and management approaches – shared vision) in the GBFW between the County and the cities of Columbia and Ashland; future planning will incorporate adaptive management
 The plan – seeks to integrate all of these components into a cohesive framework as we move forward

Specific wastewater goals with City of Columbia

- Not extending infrastructure for new development into the Greater Bonne Femme Watershed, with the exception of Gans Road
- Allowing connections to public sewer across watershed lines in limited circumstances where existing on-site system is failing and causing environmental hazard

Specific wastewater goals with City of Ashland

- Continue to work with Boone County Regional Sewer District to expand and improve wastewater system – also issues with Fowler Creek and Foster Branch that need to be resolved
- Offer assistance where possible in locating funding opportunities to improve wastewater and stormwater infrastructure – help Ashland to design a plan that works for them and integrates with the larger plan developed through the GBFWI

- County staff will be creating two reports to present to:
 - 1) City of Columbia, City Council
 - 2) City of Ashland, Board of Aldermen
- The objective of each report will be to obtain consent for city staff to participate in the GBFWI
- The provision of wastewater services will be a point of discussion in these reports
- County staff will present draft language to the BCRSD Board of Trustees at the March meeting for review