



OBM

Facilities & System

County Downs

December 15, 2023

Mr. Thomas Ratermann, P.E.
General Manager
Boone County Regional Sewer District
1314 N. Seventh Street
Columbia, MO 65201

Re: County Downs LPS Hydraulic Model

Dear Mr. Ratermann:

HDR Engineering, Inc. (HDR) is pleased to submit this Proposal to provide professional engineering services for the above referenced project. This letter details the services HDR proposes to perform, the fee to perform these services and the conditions upon which we have based this Proposal.

SCOPE OF SERVICES

The objective of the Boone County Regional Sewer District (District) is to develop a hydraulic model of the existing County Downs Low Pressure Sewer (LPS) System. The existing LPS is shown on the attached System Map.

The existing County Downs LPS System will include three separate hydraulic models described as follows:

1. Hydraulic Model #1 encompasses the existing LPS that discharges to Manhole 12399.
2. Hydraulic Model #2 encompasses the existing LPS that discharges to Manhole 10338.
3. Hydraulic Model #3 encompasses the existing LPS that discharges to Manhole 10703.

Pursuant to the District's objectives, HDR proposes the following general Scope of Services:

1. Develop three hydraulic models based upon "As-Built" information provided by the District.
2. Submit a short letter report summarizing the findings of the hydraulic model, including the capacity of the existing LPS for current conditions and future growth.

PROPOSED FEE

As remuneration for the performance of the Scope of Services described in this Proposal, HDR respectfully requests compensation in the amount of \$3,850.00. A detailed breakdown of the requested fee is included in Attachment 1.

DELIVERABLE

A short letter report (1-2 pages) summarizing the findings of the model with attachments of the model and associated mapping.

PROPOSAL CONDITIONS

This Proposal and HDR's agreement to perform the aforementioned services are based upon the following conditions:

1. The District will provide all available pertinent data related to the project. This includes pump data, As-Built Drawings, and mapping.
2. No field work will be performed.
3. Any review of current or future plans for infrastructure that will connect to the LPS is not included in this Proposal.

SCHEDULE

HDR will commit to the following schedule:

1. Submit draft letter report to the District within forty (45) calendar days after receiving a fully executed Agreement.

We greatly appreciate the opportunity to submit this Proposal. Please let me know if you have any questions or need additional information.

Thank you.

Sincerely,

Bryce Banion

Bryce Banion, P.E.
Senior Project Manager
HDR Engineering, Inc.



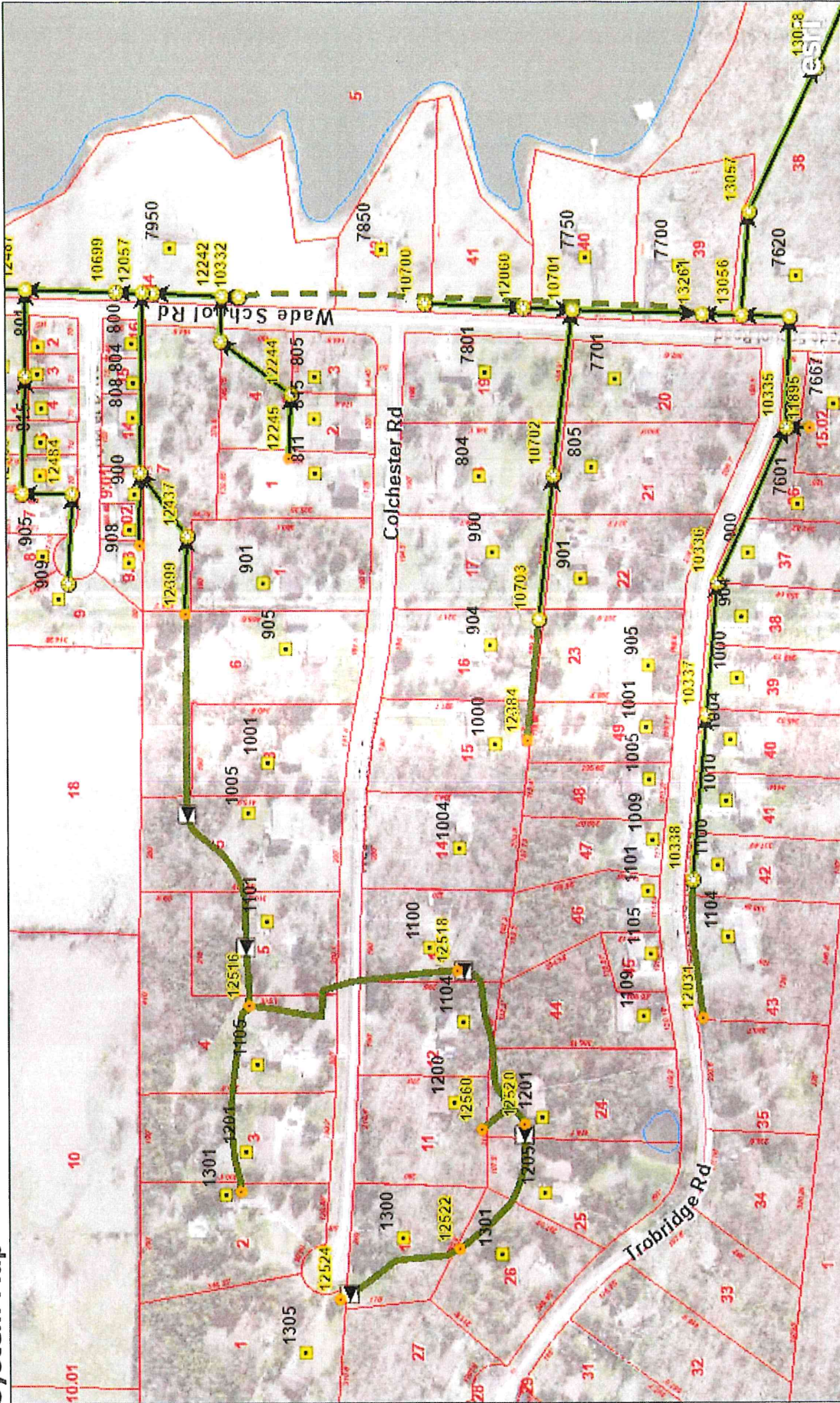
Boone County Regional Sewer District
 County Downs LPS Hydraulic Model
 Scope and Fee Estimate - December 14, 2023
 Attachment 1

Staff		Banion, Bryce S	Burditt, Kendall Marie	Fleming, Scott M		
Staff Name	Banion, B	Burditt, K	Fleming, S			Total
Rate Schedule Code	Senior Project Manager I	Engineer/Architect/Designer I	Project/Design Manager IV			
Project Role						
Billing Rate	\$235	\$130	\$235	Total HDR Hours	HDR Expenses	
TASKS						
1	Task 1 - Develop Hydraulic Model					
	Develop Hydraulic Model			0		\$0
	A. LPS Discharging to MH 12399	7	4	11		\$2,165
	B. LPS Discharging to MH 10338	1	1	2		\$365
	C. LPS Discharging to MH 10703	1	1	2		\$365
	2 Write Report			0	\$15	\$15
	A. LPS Discharging to MH 12399	1		1		\$235
	B. LPS Discharging to MH 10338	1		1		\$235
	C. LPS Discharging to MH 10703	1		1		\$235
	3 Quality Control			1		\$235
	Subtotal Hours	12	6	1	19	
	Subtotal Dollars	\$2,820	\$780	\$235	\$15	\$3,850
	Total Task 1					\$3,850
	Total Hours	12	6	1	19	38
	Total Billing Amount	\$2,820	\$780	\$235	\$15	\$3,850

Estimated Project Fee \$3,850

County Downs

System Map



DISCLAIMER: READ CAREFULLY: The existence, dimension, and location of facilities as well as other information, on this map may be based on unverified historic information and should not be relied upon for any purpose without actual field verification

Map data © OpenStreetMap contributors, CC-BY-SA | Compiled by the Bureau of Land Management (BLM), National Operations Center (NOC), OC-530. | Boone County Assessor