



Nationwide
is on your side

Get to know Nationwide Indexed Principal ProtectionSM

**Protect your money, with
an opportunity for growth**

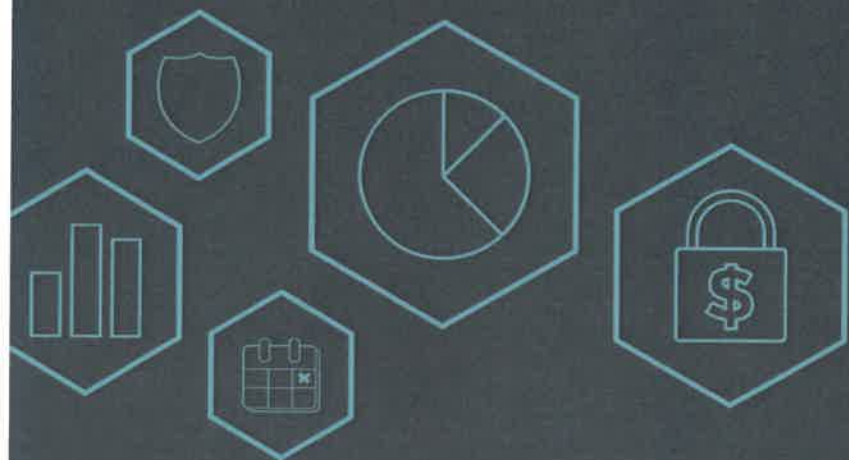


• Not a deposit • Not FDIC or NCUSIF insured • Not guaranteed by the institution • Not insured by any federal government agency • May lose value

Downside protection **with** an opportunity for growth

Nationwide Indexed Principal ProtectionSM is a long-term savings option that protects your principal.

That means no matter what the market does, your money is protected **and** you retain the opportunity for upside potential.



Here's how

Nationwide Indexed Principal Protection (NW-IPP) is a group fixed indexed annuity for retirement plans that tracks the performance of the S&P 500® Daily Risk Control 5% Excess Return Index (Index). **Your money is not directly invested in the Index**, but its performance is used to credit you with interest earnings, subject to a specific limit, called a “cap rate.”



If the Index goes up, your account will be credited with interest earnings up to the cap rate. For example, if the Index gains 8% at the end of the Index Term and your cap rate is 7%, contributions to this account will be credited with 7% interest earnings.



If the Index goes down, your account loses nothing because your principal is protected.

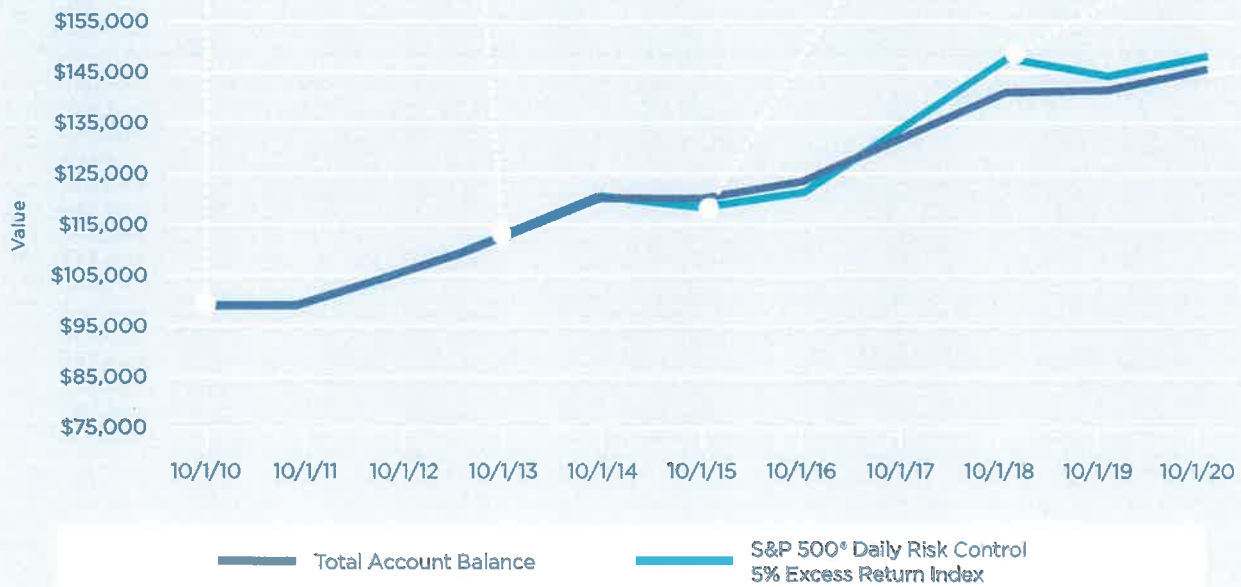
NW-IPP can help provide you with confidence through unstable market conditions.

Maria allocates money to NW-IPP, which provides principal protection along with potential for growth.

During this Index Term, the Index goes up. The increase is less than the cap, so Maria receives the amount the Index returned.

This period is negative for the Index, but Maria's principal is protected, and no previous interest earnings are lost.

Strong Index performance exceeds the cap. The Index Account increase is limited to the 7% cap rate.



Hypothetical assumptions: a \$100,000 one-time contribution is allocated to Nationwide Indexed Principal Protection™ with a 5-year book value payout term. Historical performance of S&P 500® Daily Risk Control 5% Excess Return Index assuming a 7% cap; 0% floor. This example assumes that the initial deposit on 10/1/2010 remained invested in NW-IPP for 10 years and the cap remained the same over the illustrated 10 years. The cap and interest rate may be changed for each term. This illustration is not a projection or prediction of future performance. The performance could be significantly different than the investment performance shown and shouldn't be considered a representation of performance or investor experience of the index(es) in the future. Withdrawals will reduce the contract value; this illustration does not demonstrate the impact of withdrawals.

Two ways you can take advantage of NW-IPP

Case study 1: Exchange In



Maria

- 55 years old
- Pre-retiree
- Wants to lock in gains



1. At any time, Maria can exchange any dollar amount from another investment option in her retirement plan.



2. Money allocated to NW-IPP goes into an Interest Account that earns daily interest until the end of the current quarter.



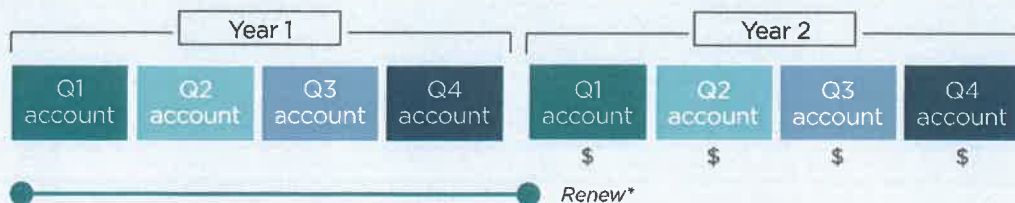
3. At the beginning of the next calendar quarter, money sitting in the Interest Account is swept into an Index Account for one year.



4. Interest earnings are credited to the Index Account at the end of the one-year Index Term and depend on the return of the Index, subject to the cap rate.



5. The one-year Index Term automatically renews with a new cap rate. Any interest earnings are locked in and the new principal amount is protected for the following year.



* Principal + interest earnings will become principal at the beginning of the next Index Term.

Case study 2: Payroll Deduction



Craig

- 35 years old
- Fiscally conservative
- Wants ability to exchange out



1. Every pay cycle, money is deducted from Craig's paycheck and contributed to his retirement plan account.



2. The money is then invested according to his allocations. Up to 100% of a portfolio can be allocated to NW-IPP.



3. Money allocated to NW-IPP goes into an Interest Account that earns daily interest until the end of the current quarter.



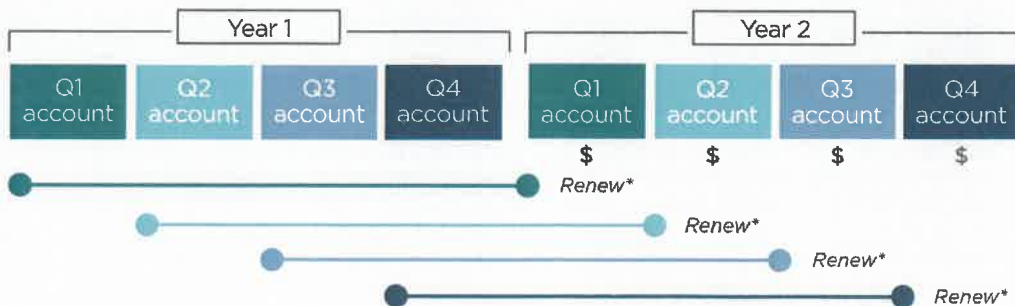
4. At the beginning of each quarter, money sitting in the Interest Account is swept into a new Index Account for one year. It's possible to have up to four Index Accounts at any given time.



5. Interest earnings are credited to each Index Account at the end of the one-year Index Term and depend on the return of the Index, subject to the cap rate.



6. Each one-year Index Term automatically renews with a new cap rate. Any interest earnings are locked in and the new principal amount is protected for the following year.



* Principal + interest earnings will become principal at beginning of the next Index Term.

Potential benefits of NW-IPP

- Principal investment protection from market declines
- Growth potential when markets are increasing, subject to the cap rate
- Gains are locked in and become part of the principal at the Index Term renewal
- Two contribution options: payroll deductions or a lump-sum dollar amount exchanged from another investment option in your plan (no minimum required)
- If you change your mind, you can exchange your money out of this investment option (restrictions may apply)
- A simple web experience makes choosing this investment option easy



Do you want help understanding how much to allocate to NW-IPP?

Our My Investment Planner™ tool can help you identify your investment style, asset mix and investment options. Find the tool in “tools & calculators” on your Plan’s website.

Important considerations

There are a few important details to remember when contributing to this investment option:

- Funds must remain in each Index Account for the entire one-year Index Term in order to receive any interest earnings, which are credited at the end of the term
- 90-day equity wash provisions may apply, which could prevent you from exchanging directly into competing short-term investment options
- Expenses are built into the investment option prior to index cap rates being declared, which means that there are no additional fees or penalties applied if you decide to exchange out of this investment option

Helpful explanations

Allocation — Money is allocated according to your investment selections. This could be a mix of investment options, including equity mutual funds and fixed income mutual funds, as well as NW-IPP. Up to 100% of your portfolio can be allocated to NW-IPP.

Cap rate — This is the upper limit of interest earnings that can be credited at the end of the Index Term. It is expressed as a percentage of assets in NW-IPP.

Contributions — Every pay cycle, money is deducted from your paycheck and contributed into your retirement plan account as usual. Money can also be reallocated from other investment options in the retirement plan to NW-IPP via an exchange.

Equity Wash — A provision that requires participant exchanges from NW-IPP to a competing investment option (for example, a money market fund or a short-term bond fund) to first be directed to any other investment option not designated as a competing option for a period of time, usually 90 days. This provision is designed to reduce incentives to buy or sell because of price differences between markets, thereby protecting you and the returns of the investment option over the long term.

Index Term — This is the one-year period during which the Index performance is determined, and the cap rate is applicable.

Index Account — It's possible to have up to four (4) NW-IPP Index Accounts at any given time. Each account has its own cap rate and has a maturity of one year before it automatically renews. Interest earnings are credited depending on the cap rate and the annual performance of the S&P 500 Daily Risk Control 5% Excess Return Index.

Interest Account — At the time of each payroll deduction or lump-sum exchange, money allocated to NW-IPP goes into an Interest Account, which earns nominal interest. At the beginning of each quarter, all the money in the Interest Account is automatically swept into a new Index Account.

Maturity — This is the point in time when the NW-IPP has reached the end of the Index Term and any interest earnings have been credited.





For additional information and resources, contact your Plan Sponsor or visit your plan website.



• Not a deposit • Not FDIC or NCUSIF insured • Not guaranteed by the institution • Not insured by any federal government agency • May lose value

This material is not a recommendation to buy, sell, hold or roll over any assets, adopt an investment strategy, retain a specific investment manager or use a particular account type. It does not take into account the specific investment objectives, tax and financial condition or particular needs of any specific person. Investors should discuss their specific situation with their financial professional.

The "S&P 500" is a product of S&P Dow Jones Indices LLC ("SPDJI") and has been licensed for use by Nationwide Life Insurance Company ("Nationwide"). Standard & Poor's, S&P and S&P 500 are registered trademarks of Standard & Poor's Financial Services LLC ("S&P"); DJIA, The Dow, Dow Jones and Dow Jones Industrial Average are trademarks of Dow Jones Trademark Holdings LLC ("Dow Jones"); and these trademarks have been licensed for use by SPDJI and sublicensed for certain purposes by Nationwide. The Nationwide Indexed Principal Protection group fixed indexed annuity is not sponsored, endorsed, sold or promoted by SPDJI, Dow Jones, S&P or their respective affiliates, and none of such parties makes any representation regarding the advisability of investing in such product(s) nor do they have any liability for any errors, omissions or interruptions of the S&P 500.

Group fixed indexed annuities are not stock market investments and do not directly participate in any stock or equity investments. The index does not include dividends paid on the underlying stocks, and therefore does not reflect the total return of the underlying stocks; neither a market index nor any fixed indexed annuity is comparable to a direct investment in the equity markets. When you purchase Nationwide Indexed Principal Protection, you are not directly investing in a market index. The actual return of the index account will be based on the performance of the underlying index. It is important to understand that actual returns may be less than the return of the index due to the index cap. Past index performance is not a guarantee of future performance.

Group fixed indexed annuities are contracts purchased from a life insurance company. They are designed for long-term retirement goals. Withdrawals are subject to income tax, and withdrawals before age 59½ may be subject to a 10% early withdrawal federal tax penalty. Nationwide Indexed Principal Protection is a group fixed indexed annuity issued by Nationwide Life Insurance Company and held in the general account.

Guarantees are backed by the claims-paying ability of the issuing insurance company. Transfers out of this contract to other funding providers are subject to certain restrictions. Contact your plan sponsor for information regarding these restrictions.

Nationwide, the Nationwide N and Eagle, Nationwide Is on your side, Nationwide Indexed Principal Protection and My Investment Planner are service marks of Nationwide Mutual Insurance Company. © 2020 Nationwide